

PROFICY® OPERATIONS HUB FUNDAMENTALS



Instructor-led Training

TOPICS

- Discuss the architecture and components of Proficy Operations Hub.
- Navigate the Configuration Hub and Operations Hub designer environments.
- Create, configure, and implement a basic application with queries and widgets/plugin-ins.
- Define and build an asset model.
- Use Proficy Historian with Operations Hub.
- Create apps and queries that utilize Relational Database data sources and HMI Widgets
- Apply Operations Hub security

01 Course Description

The Proficy Operations Hub course is designed to provide the student with a good working knowledge of using Operations Hub. Topics covered have a developer focus as you learn to use the designer environment. This hands-on course introduces the solution's key features, guiding learners through application design, secure user access, and responsive interface creation—all without requiring programming skills. Extending the capabilities of Proficy Historian, with Operations Hub is the central theme of this training. The course provides lab time for building skills essential to developing applications and visualization solutions.

02 Who Should Attend

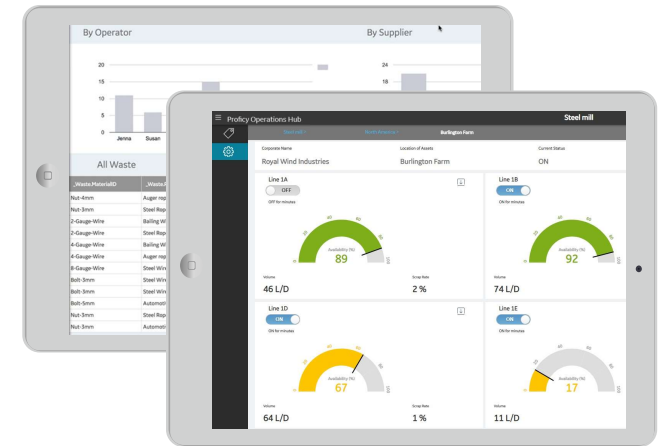
This course is designed for process, automation, or instrumentation engineers and system integrators who will be developing, configuring, and using Proficy Operations Hub with the Proficy Historian solution. Learners should be ready to build the foundational capabilities needed to create modern, efficient, and user-friendly operations applications.

03 Are there any pre-requisites?

Participants should have a working knowledge of industrial applications. IIOT exposure and experience with Proficy Historian is recommended.

04 Course Schedule

Click [here](#) for the latest details



Time Commitment

16 Hours

Delivery

Instructor-led (Distance learning or classroom)

Part

44A728312-460

Level

Fundamentals

PROFICY® OPERATIONS HUB FUNDAMENTALS



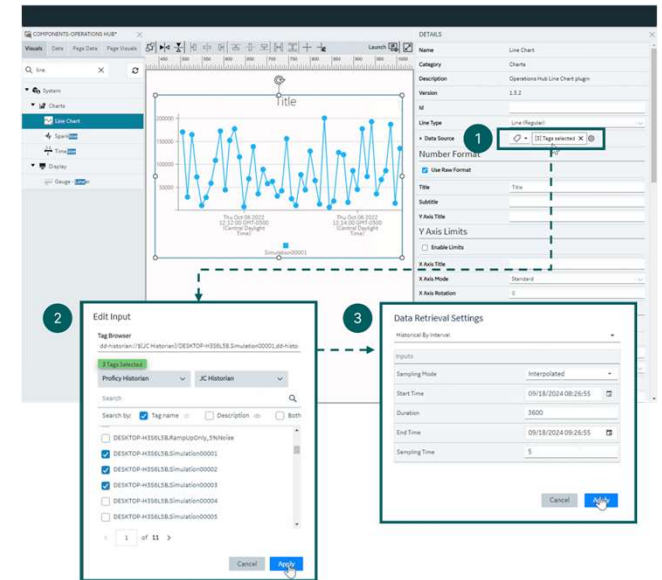
Instructor-led Training

Session 1 & 2

- **Introduction** - This module introduces the core features of Proficy Operations Hub and its role in modern manufacturing. You explore key user roles, navigate the Operations Hub Designer, and discover how to build applications without programming skills. The chapter also covers the use of HTML5 and CSS3 for responsive design and explains how to implement Proficy Authentication to ensure secure user access and proper certificate management.
- **Architecture** - Learn about the core architecture and technologies behind Proficy Operations Hub. You will review system requirements, installation steps, and licensing options, then build a basic application by configuring pages, navigation, and data connections using supported data sources and connectivity types.
- **Applications** - This section covers the integration and app development workflow within the Proficy manufacturing suite. You will build practical skills in creating, managing, and customizing applications and pages using widgets and cards. The module explores configuring integrated applications, performing key development tasks such as importing, exporting, and duplicating applications, and using Configuration Hub to enhance functionality, user experience, and visual design through themes and settings.
- **Historian Integration** - This module focuses on integrating Proficy Operations Hub with Proficy Historian to enable effective data management and visualization. You will create and configure Historian data sources, use built-in analysis tools for real-time and historical insights and develop asset models that represent production structures. The module also covers asset import/export workflows and configuring asset navigation.

Session 3 & 4

- **Historian Data and Queries** - Review how to build and link queries to application pages in Proficy Operations Hub. You will work with REST, Entity, SQL, and Extension queries, connect query outputs to widgets for dynamic visualization, and use key widget types including containers, repeaters, breadcrumbs, HTML, and datetime controls. The module also covers adding user-defined inputs to create flexible, interactive data views.
- **Advanced Data Sources** - This chapter covers how to integrate relational databases and REST APIs within Operations Hub. You will create database and API data sources, build queries including stored procedure calls and design pages that visualize and interact with this data. The module also introduces testing and integrating REST APIs using tools like Swagger and Postman, as well as using Python scripts for data manipulation and advanced visualization.
- **HMI Graphics and Widgets** - Explore how to use of the SVG Editor to create, customize, and manage high-performance HMI graphics for industrial applications. You will build graphics using built-in tools, import and refine third-party SVG files, apply animations and data bindings for interactivity, and organize custom graphics into reusable categories.
- **Security** - This module introduces the core concepts of User Authentication and Authorization (UAA) in Operations Hub. You will manage users, groups, and roles to ensure secure, role-based access to applications and data. The module also covers working with different user types, mapping LDAP accounts, and configuring Operations Hub roles to support effective access control.



Visit the EDGE

Browse the public catalog

Request an account