

Plant Applications Fundamentals

Instructor-led

Topics

-)] Exploring the Plant Applications architecture and its components.
-)] Creating, configuring and implementing a Plant Model.
-)] Creating aggregate and custom calculations.
-)] Configuring Event Models.
-)] Configuring Production Unit Events and Activities.
-)] Defining and applying specifications.
-)] Applying alarm rules in Plant Applications.
-)] Using Plant Applications Web Displays.
-)] Applying the Plant Applications Security Model.

Course description

Plant Applications Fundamentals will cover how to configure and maintain Plant Applications software.

This course provides an introduction to essential Plant Applications administrator capabilities and applications. This includes learning to configure the plant model, products, events and activities. Navigating the Web Client and running Web Displays will also be covered. Valuable hands-on lab exercises are provided which guide students through the configuration of out-of-the-box solution capabilities.

Who should attend?

The course is intended for Plant Applications Administrators and power users that are responsible for configuration and support of the solution.

Are there any pre-requisites?

Participants should have an understanding of manufacturing terminology and the role of industrial software. General knowledge of SQL Server, Excel, and Internet Information Server (IIS) is also a requirement.

Part

44A728312-651

Delivery

Instructor-led, classroom, virtual or onsite

Duration

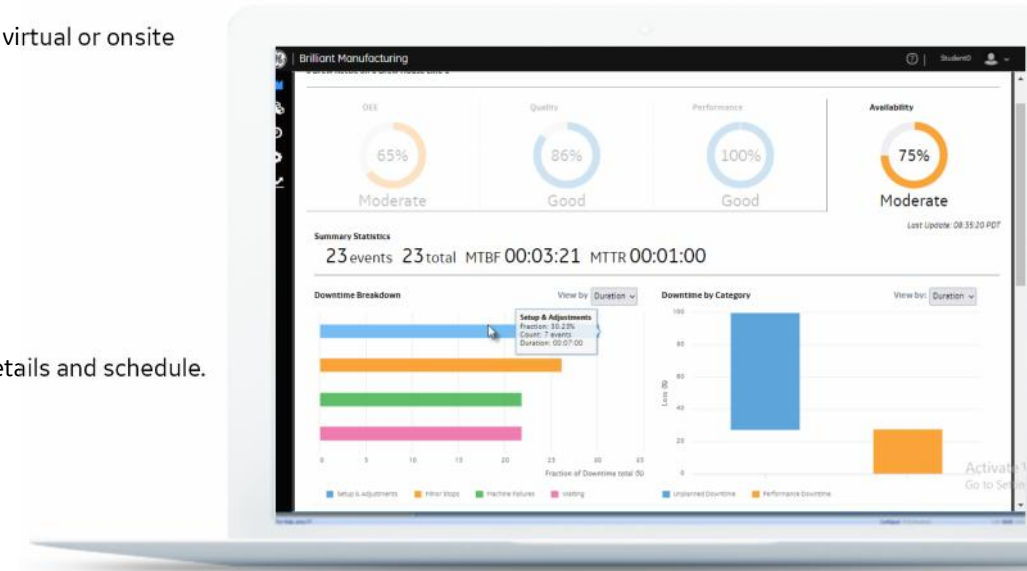
24 hours

Suggested class size

8 Students

Course Schedule

Click [here](#) for the latest details and schedule.





Session 1

Plant Applications Introduction

Study the basic features and architecture of Plant Applications. Review Plant Applications' components and client tools.

Administrator

Review the server communication strategy and explore Plant Applications control services and microservices. Navigate the Administrator Client and discover the functions available with site parameters and server user parameters. Learn to configure data sources.

Plant Model

Configure Departments, Production Lines, Production Units and Variables. Learn to use the Import/Export tool of Plant Applications. Add Variables, examine key variable properties and study time interval data logging.

Session 2

System Calculations

Learn how to acquire data from Process Historians, and aggregate the data as needed. Examine the sampling types and intervals of Plant Applications.

User Defined Calculations

Create Calculations using the Equation Editor, VB Script, and Stored Procedures. Discover how to use User Defined calculation templates and the calculation library.

Session 3

Events

Learn about Events and Event Types while furthering your understanding of data context and detection. Configure Event Models and learn how to automatically detect Events in Plant Applications. Create a crew schedule while learning to use Model 801.

Production Events and Activities

Configure Production Event Type Variables and Production Events on Production Units while learning how to automatically detect them with an Event Model (Model 800). Define Event Statuses and transitions. Build and use Activities for event data logging while exploring Autolog and Web Client display options.

Product Management

Configure Products and assign them to Production Units. Explore Product Change Events. Learn how to configure Product Change Event Models 803 and 100.

Session 4

Specifications

Introduce the features of Plant Applications Quality Management. Describe the relationship of product information with specifications. Define quality and process specifications at Unit and Plant-wide levels. Explore client display specification settings and how to implement a test frequency.

Session 4 (continued)

Alarms

Discover how to setup alarming conditions based on data points outside of their specification limits. Define and view alarms from an Alarm View Display and the Web Client to alert on process variations. View an ad-hoc trend from an alarm notification.

Plant Applications Security

Review the Plant Applications Security Model. Learn to apply security in Plant Applications (Administrator security, Web Client security and user (Data Level) security). Examine Plant Applications' Electronic Signatures.

EDGE Learning Portal

EDGE is Education@GE.

It's our learning platform hosted on the web.

Around the world. Around the clock.

[Visit the EDGE](#)

[Browse our public catalog](#)

[Request an account today](#)

GE Digital Education Services

Contact Information

GE Digital — Education Services

1 800 433 2682

Email: training.ip@ge.com

EDGE: [click here](#)

web: [click here](#)

About GE

GE (NYSE: GE) is the world's Digital Industrial Company, transforming industry with software-defined machines and solutions that are connected, responsive and predictive.

GE is organized around a global exchange of knowledge, the "GE Store," through which each business shares and accesses the same technology, markets, structure and intellect. Each invention further fuels innovation and application across our industrial sectors. With people, services, technology and scale, GE delivers better outcomes for customers by speaking the language of industry.

Contact Information

Americas: 1-855-YOUR1GE (1-855-968-7143)

gedigital@ge.com

www.ge.com/digital

©2021 General Electric. All rights reserved. *Trademark of General Electric. All other brands or names are property of their respective holders. Specifications are subject to change without