

Historian Fundamentals

Instructor-led

Topics

- Understand architecture communication between Historian Servers and Client nodes.
- Configure Historian using both the Windows and Web Historian Administrators .
- Manage and configure data stores and archives.
- Configure Data Collectors, including the Simulation collector, OPC DA and OPC UA (DA) collectors, File collector and Windows Performance collector.
- Use the Web Administrator and Web Trend Client.
- Use the Excel Add-In to both view collected data and to Administer the Historian Server.
- Configure the Historian OLE DB Provider.
- Design and build a security strategy.
- Use Windows and Historian utilities to troubleshoot a Historian system.

Course description

The *Historian Fundamentals* course is designed to provide the student with a good working knowledge of the standard edition of Historian. Topics include administration focus for the server-based tasks as well as development focus for the client-based activities. The course provides lab time for building skills essential to developing and maintaining the Historian in a process environment.

Who should attend?

This course is designed for process, automation, or instrumentation engineers and system integrators who will be developing, configuring, and using applications on a Historian system .

Are there any pre-requisites?

Participants should have a working knowledge of Windows operating systems and Microsoft Excel.

Part

44A728312-345

Delivery

Instructor-led, classroom, virtual or onsite

Duration

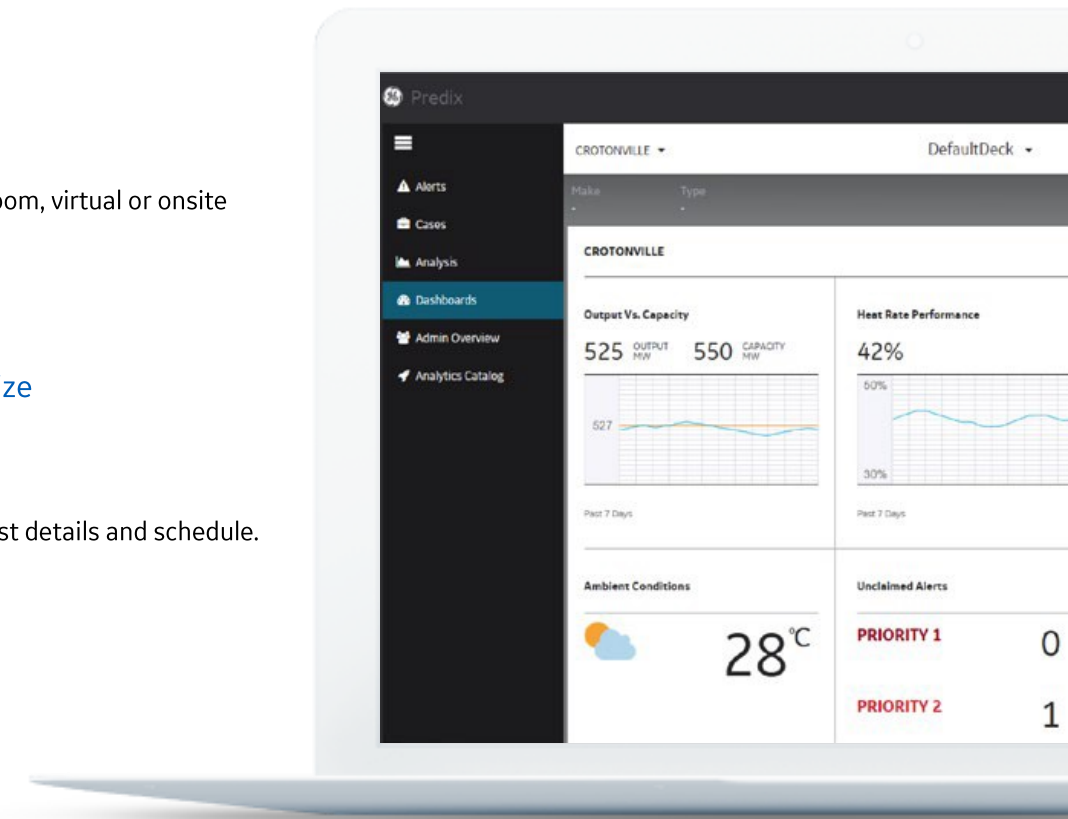
16 hours

Suggested class size

10 Students

Course Schedule

Click [here](#) for the latest details and schedule.





Session 1

Introduction to Historian

Study the basic features and architecture of Historian software.

Architecture & Administration

Look at Historian components, architecture and the Historian Administrator.

Data Stores & Archives

Configure and manage Historian Data Stores and Archives.

Introduction to Collectors

Understand the available collectors and install collectors using the installer. Discuss collector redundancy.

Session 2

Tags

Explore tag configuration, sampling, compression and maintenance.

OPC Collector

Explore the OPC DA and OPC UA (DA) Collectors.

File Collector

Configure xml or csv files for collection by Historian.

Historian Web Administrator

Explore the features of the Web Administrator, using it to configure the Historian Server.

Session 3

Historian Clients

Understand the available clients, including Historian Analysis, OLE DB and the Excel Add-In.

Historian Web Trend Client

Utilize the Web Trend Client to present collected data through Charts, Tables, Value Cards and text blocks.

Historian Excel Add-in

Build reports to display Historian data using the Excel Add-In.

Session 4

Administration with the Excel Add-in

Administer Historian tags, data messages and alarms using the Excel Add-In .

Historian OLE DB

Access Historian data using standard OLE DB applications, including the Historian Interactive SQL Client.

Historian Security

Design and build a Historian security strategy.

Historian Troubleshooting

Learn about the Windows Performance collector. Use Windows and Historian tools to troubleshoot the system.

GE Digital Education Services

Contact Information

GE Digital — Education Services

1 800 433 2682

Email: training.ip@ge.com

EDGE: [click here](#)

web: [click here](#)

About GE

GE (NYSE: GE) is the world's Digital Industrial Company, transforming industry with software-defined machines and solutions that are connected, responsive and predictive.

GE is organized around a global exchange of knowledge, the "GE Store," through which each business shares and accesses the same technology, markets, structure and intellect. Each invention further fuels innovation and application across our industrial sectors. With people, services, technology and scale, GE delivers better outcomes for customers by speaking the language of industry.

Contact Information

Americas: 1-855-YOUR1GE (1-855-968-7143)

gedigital@ge.com

www.ge.com/digital

©2015 General Electric. All rights reserved. *Trademark of General Electric. All other brands or names are property of their respective holders. Specifications are subject to change

EDGE Learning Portal

EDGE is Education@GE.

It's our learning platform hosted on the web.

Around the world. Around the clock.

[Visit the EDGE](#)

[Browse our public catalog](#)

[Request an account today](#)